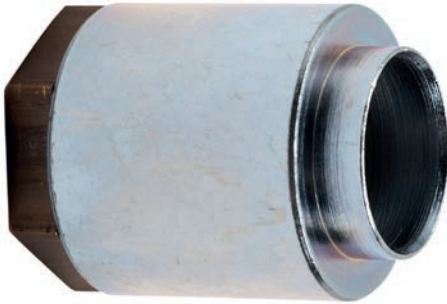
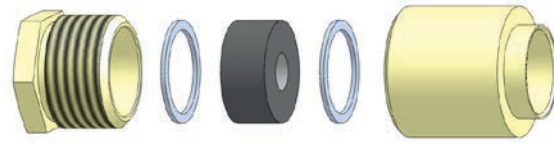


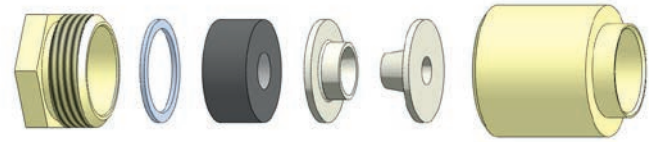
Rivet Type Cable Glands of Brass



Calypso



type of fitting "W"
for unscreened cable



type of fitting "Z"
for screened cable

Technical Data

No. Outfit "Z"	No. Outfit "W"	Thread/ Rivet Ø mm	For Cabel Ø mm	Sealing Ring Inner Ø mm DIN 89349	Washer Inner Ø mm DIN 89347	Nominal Size of Earthing Insert DIN 89345	kg/piece	Description
187 N - Z 6	187 N - W 6	M 18 x 1,5/15	6 - 7,5	18-06*	"18-09	18-06	0,057	• brass cable gland acc. to DIN 89280, rivet type
187 N - Z 8	187 N - W 8		7 - 8,5	18-08	18-09	18-06		
187 N - Z 10	187 N - W 10		8 - 10,5	18-10	18-11	18-07		
186 N - Z 8 A	186 N - W 8 A	M 24 x 1,5/20	7 - 8,5	24-08	24-09	24-06	0,085	
186 N - Z 10 A	186 N - W 10 A		8 - 10,5	24-10	24-11	24-07		
186 N - Z 12	186 N - W 12		10 - 12,5	24-12	24-13	24-08		
186 N - Z 14	186 N - W 14		12 - 14,5	24-14	24-15	24-10		
186 N - Z 16	186 N - W 16		14 - 16,5	24-16	24-17	24-13		
186 N - Z 17	186 N - W 17	16 - 17,5	24-17	24-18	24-14			
185 N - Z 15	185 N - W 15	M 30 x 2/26	14,5 - 16,5	30-15*	30-19	30-16	0,150	
185 N - Z 18	185 N - W 18		16 - 18,5	30-18	30-19	30-16		
185 N - Z 20	185 N - W 20		18 - 20,5	30-20	30-21	30-18		
184 N - Z 18 A	184 N - W 18 A	M 36 x 2/32	16,5 - 18,5	36-18*	36-18	36-20	0,205	
184 N - Z 22	184 N - W 22		20 - 22,5	36-22	36-23	36-20		
184 N - Z 24	184 N - W 24		22 - 24,5	36-24	36-25	36-22		
184 N - Z 26	184 N - W 26		24 - 26,5	36-26	36-27	36-24		
183 N - Z 28	183 N - W 28	M 45 x 2/40	26 - 28,5	45-28	45-29	45-27	0,345	
183 N - Z 30	183 N - W 30		28 - 30,5	45-30	45-31	45-30		
183 N - Z 32	183 N - W 32		30 - 32,5	45-32	45-33	45-30		
182 N - Z 35	182 N - W 35	M 56 x 2/50	32 - 35,5	56-35	56-36	56-35	0,455	
182 N - Z 38	182 N - W 38		35 - 38,5	56-38	56-39	56-39		
182 N - Z 41	182 N - W 41		38 - 41,5	56-41	56-42	56-36		
181 N - Z 44	181 N - W 44	M 72 x 2/65	41 - 44,5	72-44	72-45	72-44	0,645	
181 N - Z 48	181 N - W 48		44 - 48,5	72-48	72-49	72-48		
181 N - Z 52	181 N - W 52		48 - 52,5	72-52	72-53	72-52		
-	181 N - W 56		52 - 56,5	72-56	72-57	-		

* Special size (similar to DIN 89349)

For an extra charge all cable glands are also available with chrome plated or nickel plated galvanic surface.