

263
262
201
244

Coral

Sockets for Test Panels

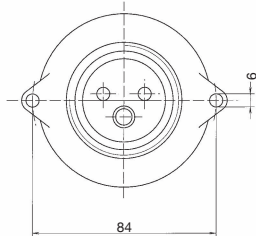
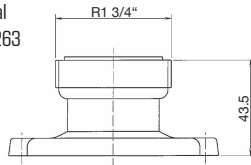
karl-dose.de/**Coral**



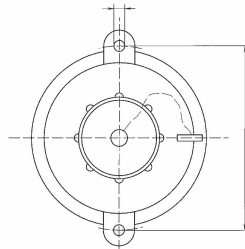
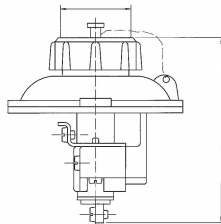
Coral
201

polished version

Coral
262/263



Coral
201



Technical Data

Name & No.	Pole	kg	Description
Coral 263	2P+PE	0,36	<ul style="list-style-type: none"> IP56 brass casing steatite socket interior acc. to DIN 89320, with sealing ring, without screw cap 16A AC/10A DC design 1 (max. 150V)
Coral 262	2P+PE	0,36	<ul style="list-style-type: none"> IP56 brass casing steatite socket interior acc. to DIN 89320, with sealing ring, without screw cap 16A AC/10A DC design 2 (max. 250V)
Coral 201	2P	0,40	<ul style="list-style-type: none"> IP56 brass casing, plastic screw cap steatite socket interior, with sealing ring 10A DC max. 50V
Coral 244	4P	0,26	<ul style="list-style-type: none"> IP56 brass casing, plastic screw cap with sealing ring 6A DC max. 50V

Spare Parts

No.	kg	Description
430	0,05	plastic screw cap R1 3/4", complete
430/Ms	0,12	brass screw cap R1 3/4", complete

Polished products available for an extra charge.

