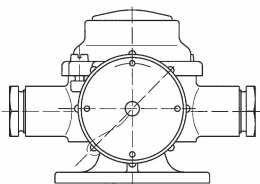
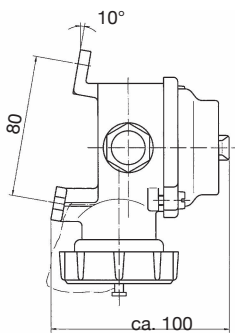
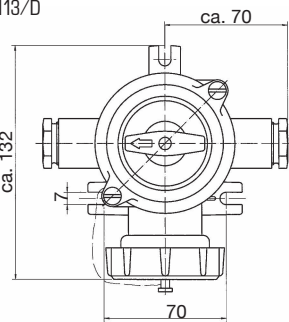




polished version

Baffin
113/2/LBaffin
113/D**Technical Data**

Name & No.	Diagram	Pole	kg	Description
Baffin 113/L	-O	2P+PE	1,40	<ul style="list-style-type: none"> • IP56 • brass casing and cover, plastic screw cap • cable gland: M24x1.5 • undetachable cover screws M6, steatite socket interior acc. to DIN 89320, switch interior 2-pole cut-out, acc. to DIN 89322-1/2 • max. 150V (design 1-DIN 89263) • 16A AC / 10A DC
Baffin 113/R	O-	2P+PE	1,40	
Baffin 113/D	-O-	2P+PE	1,43	
Baffin 113/2/L	=O	2P+PE	1,45	
Baffin 113/2/R	O=	2P+PE	1,45	
Baffin 115/R	O-	2P+PE	1,40	
Baffin 115/L	-O	2P+PE	1,40	<ul style="list-style-type: none"> • IP56 • brass casing and cover, plastic screw cap • cable gland: M24x1.5 • undetachable cover screws M6, steatite socket interior acc. to DIN 89320, switch interior 2-pole cut-out, acc. to DIN 89322-1/7 • max. 250V (design 2-DIN 89263) • 16A AC / 10A DC
Baffin 115/D	-O-	2P+PE	1,43	
Baffin 115/2/R	O=	2P+PE	1,45	
Baffin 115/2/L	=O	2P+PE	1,45	
Baffin 115/L	-O	2P+PE	1,43	

Spare Parts

No.	kg	Description
159	0,08	socket interior acc. to DIN 89320, design 1, max. 150V
160	0,08	socket interior acc. to DIN 89320, design 2, max. 250V
430	0,05	plastic screw cap R1 3/4", complete
430/Ms	0,12	brass screw cap R1 3/4", complete
406	0,10	Switch interior 2-pole cut out 10A
3200997	0,02	Toggle with screw and spring for HNA 10A

Switch interior 2-pole cut out 16A (not standardised) available against extra charge.

Also available with brass screw cap, supplement charge.

Polished products available for an extra charge.



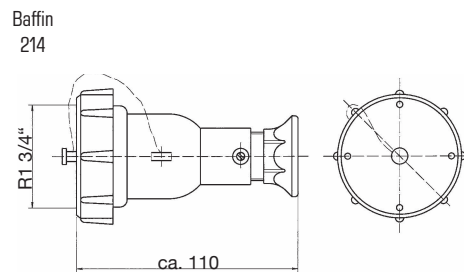
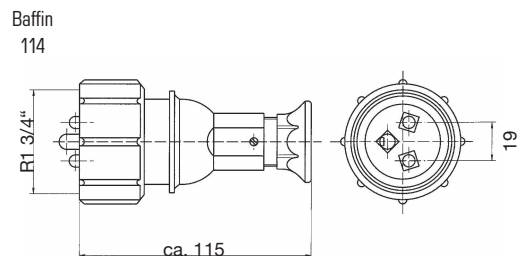
Baffin
114



Baffin
214

Technical Data

Name & No.	Pole	kg	Description
Baffin 114	2P+PE	0,55	<ul style="list-style-type: none"> • plug • IP56
Baffin 114/P	2P+PE	0,21	<ul style="list-style-type: none"> • brass or plastic (P) casing • max. 150V (design 1-DIN 89267) • 16A AC / 10A DC
Baffin 214	2P+PE	0,45	<ul style="list-style-type: none"> • coupling • IP56
Baffin 214/P	2P+PE	0,17	<ul style="list-style-type: none"> • brass or plastic (P) casing • max. 150V (design 1-DIN 89266) • 16A AC / 10A DC
Baffin 116	2P+PE	0,55	<ul style="list-style-type: none"> • plug • IP56
Baffin 116/P	2P+PE	0,21	<ul style="list-style-type: none"> • brass or plastic (P) casing • max. 250V (design 2-DIN 89267) • 16A AC / 10A DC
Baffin 216	2P+PE	0,45	<ul style="list-style-type: none"> • coupling • IP56
Baffin 216/P	2P+PE	0,17	<ul style="list-style-type: none"> • brass or plastic (P) casing • max. 250V (design 2-DIN 89266) • 16A AC / 10A DC

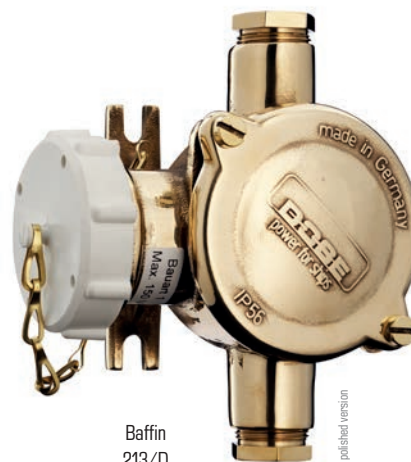


Spare Parts

No.	kg	Description
161	0,11	plug interior acc. to DIN 89320, design 1, max. 150V
159K	0,12	coupling interior acc. to DIN 89320, design 1, max. 150V
160K	0,12	coupling interior acc. to DIN 89320, design 2, max. 250V
162	0,11	plug interior acc. to DIN 89320, design 2, max.250V
430	0,05	plastic screw cap R1 3/4", complete
430/Ms	0,12	brass screw cap R1 3/4", complete

Also available with brass screw cap, supplement charge.

Polished products available for an extra charge.



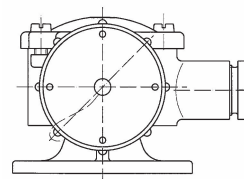
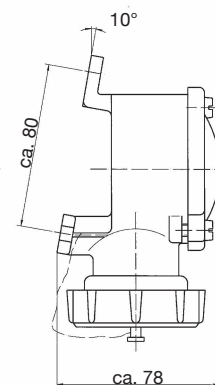
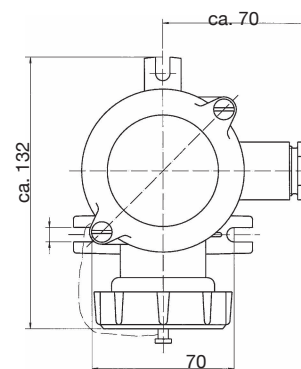
Baffin
213/D

polished version

Technical Data

Name & No.	Diagram	Pole	kg	Description
Baffin 213/L	-O	2P+PE	0,95	• socket • IP56
Baffin 213/R	O-	2P+PE	0,95	• brass casing and cover, plastic screw cap • cable gland: M24x1.5 • undetachable cover screws M6, steatite socket interior, acc. to DIN 89320
Baffin 213/D	-O-	2P+PE	1,05	• max. 150V (design 1-DIN 89262) • 16A AC / 10A DC
Baffin 213/2/L	=O	2P+PE	1,05	
Baffin 213/2/R	O=	2P+PE	1,05	
Baffin 215/L	-O	2P+PE	0,95	• socket • IP56
Baffin 215/R	O-	2P+PE	0,95	• brass casing and cover, plastic screw cap • cable gland: M24x1.5 • undetachable cover screws M6, steatite socket interior acc. to DIN 89320
Baffin 215/D	-O-	2P+PE	1,05	• max. 250V (design 2-DIN 89262) • 16A AC / 10A DC
Baffin 215/2/L	=O	2P+PE	1,05	
Baffin 215/2/R	O=	2P+PE	1,05	

Baffin
213/R



Spare Parts

No.	kg	Description
159	0,08	socket interior acc. to DIN 89320, design 1, max. 150V
160	0,08	socket interior acc. to DIN 89320, design 2, max. 250V
430	0,05	plastic screw cap R1 3/4", complete
430/Ms	0,12	brass screw cap R1 3/4", complete

Also available in 24V version.

Also available with brass screw cap, supplement charge.

Polished products available for an extra charge.

